

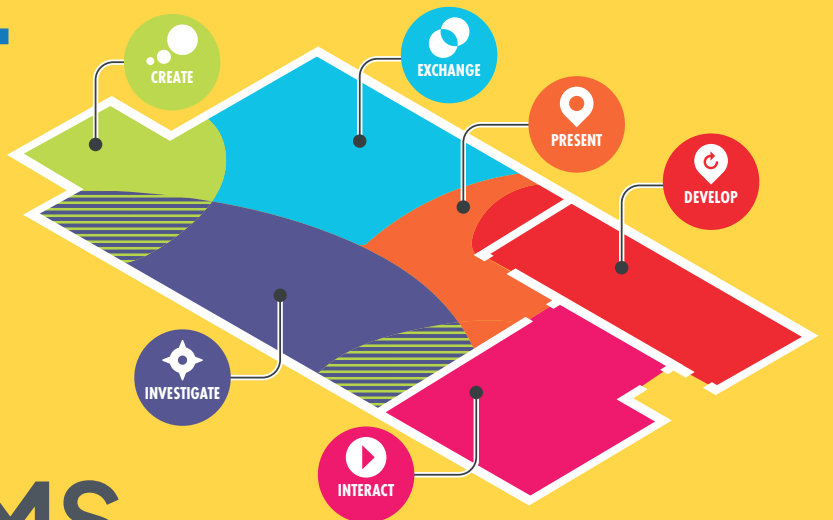
emko | edu

INNOVATIVE EDUCATION FURNITURE



emkoFCL

LET'S
SHAPE THE
FUTURE OF
CLASSROOMS
TOGETHER!



ee.com.tr



emkoFCL

Emko Future Classroom Lab: Offering a Flexible, Creative, and Collaborative Environment.

Discover the Learning Zones of the Future with EmkoFCL!

Emko Education Solutions, a leader in the education sector, brings the Future Classroom Lab (FCL) concept to Turkey. This initiative is supported by the ministries of education from 15 countries and developed in collaboration with over 30 industry partners. With this next-generation classroom concept, Emko Education Solutions provides unique solutions to create student-centered and technology-driven learning environments that support the development of 21st-century skills.

Achieve Your Goals with EmkoFCL



Strengthen
Collaboration
in Education



Integrate
Technology
into Education



Modernize
Learning
Environments



Create
Inspiring Learning
Spaces



Develop
21st-Century
Skills



Learning Zones

Interact - Exchange - Investigate - Create
Present - Develop



Interact



EmkoFCL, with its interactive flat panels and innovative solutions, enables students to move beyond passive listening, freely express their ideas, and actively engage in the learning process.



Line+ Lectern

Offering an ideal solution, it functions as both a lectern and a desk, featuring a portable and durable design.



EmkoBoard

EmkoBoard interactive flat panels make lessons more effective and dynamic.



Alto Mobile Chair

Equipped with a wheeled star base and a synchronized dashpot system, it provides ease of movement and seamless adjustability.



Investigate



EmkoFCL's innovative products, such as the Robotic Desk, Workbench, and Walking Learning Wall, support students in conducting research independently or in groups.



Robotic Desk

With its easily stackable, modular, and detachable-attachable design, it offers flexible use. Equipped with a wheel system for mobility, it also features a storage box for added convenience.

Workbench

The Workbench, with its durable structure and ergonomic design, provides an ideal space for projects and hands-on activities. It enables students to develop their creative and analytical skills.



Walking Learning Wall

With its seamless writing surface, large workspace, and rail system, it enables the use of multiple boards. It can also function as a board with its magnetic holders.

Exchange

The Exchange Area is a learning environment that emphasizes collaboration and shared responsibility. When supported by Modular Desks, it enhances the efficiency of both individual and group work. Combined with technology, it offers rich communication and dynamic group collaboration opportunities.



Modular Wings Desk

With its modular structure and wheeled design, it is portable and ideal for both individual and group work. Its stackable feature ensures practical and efficient use.

Develop

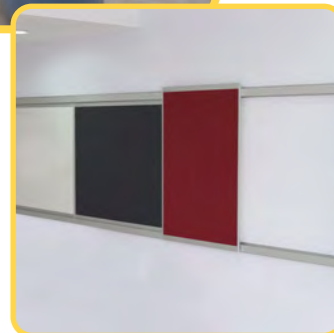


The Develop Area is a space where students focus on individual work and have the opportunity to learn at their own pace. In the EmkoFCL concept design, the use of individual desks and flexible work arrangements strengthens students' self-efficacy and metacognitive skills.



U Bookshelf

A multifunctional design that serves as both a seating area and a bookshelf. It combines storage and relaxation needs, offering a flexible and practical solution.



Modular Rail System

With its versatile surfaces, it can be used as a board or a writing board. Its easily interchangeable design adapts to various needs.



Create

The Create Area is a space where students enhance their creativity and work on their own projects. With its studio-style design, this area enables students to transform acquired knowledge into new creations through analysis, synthesis, and evaluation.



Foldable Family Table

Providing a wide work surface, it features a space-saving foldable leg design and a wheel system for practical and convenient use.



Study Desk

With its spacious and ergonomic design, it meets students' needs for individual focus and self-assessment.



Present



The Present Area is a space where students can showcase the projects and ideas they develop during the learning process. Designed in collaboration with EmkoBoard and Emko Podium, this area supports confidence, expression, and communication skills.



Emko Podium

The Digital Podium offers a perfect solution for presentations. With adjustable height, an all-in-one PC, and instant screen sharing to Emko's interactive flat panels, it elevates communication skills to the highest level in the Present Area.



Amphitheater Pouf

The amphitheater design ensures a comfortable listening experience for the audience and enhances the viewing angle.

International Vision With Emko Assurance!

15+

Countries'
Ministries of Education
Supporting This Model

30+

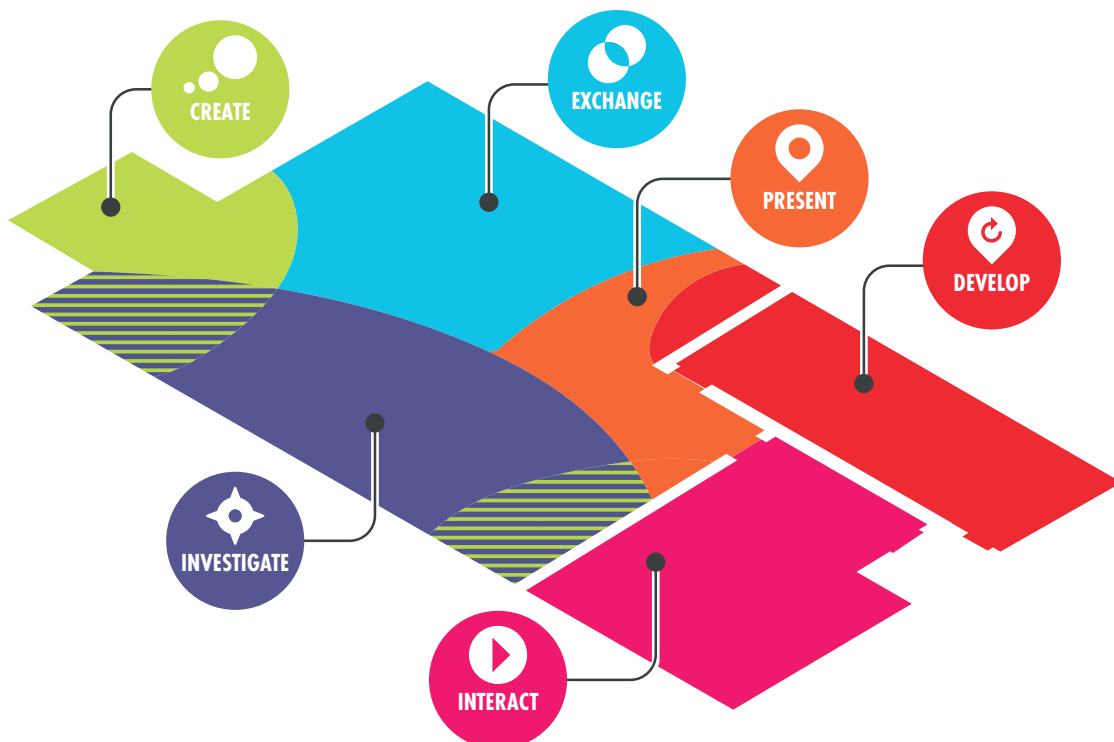
Global Industry Partners
Contributed to
Its Development

45+

Years of
Emko Education
Solutions Expertise,
Ready for Presentation

The Global Power of FCL and Emko's Contribution


The Future Classroom Lab (FCL) is an innovative educational model supported by the Ministries of Education in 15 countries and developed in collaboration with over 30 industry partners worldwide. Emko Education Solutions brings this international concept to Turkey and global clients, setting new standards for modern learning environments. With Emko's engineering and design expertise, FCL continues to make a difference in education with flexible, functional, and technology-driven classroom solutions.



emko | edu

INNOVATIVE EDUCATION FURNITURE


info@ee.com.tr


+90 212 886 86 85


ee.com.tr

