

emko

CLASSROOM
OF THE FUTURE



EDUCATIONAL FURNITURES



www.ee.com.tr





Emko - Education Expert

Emko aims to offer high quality and modern products to its customers with affordable prices in every field of the education since 1979.

We put our signature under every product we offer,

The reason why we have a high quality brand value in the domestic and international arena is that we design and manufacture our products by ourselves and go through the quality control process. Our number one mission is always to leave happy customers behind us.

We offer solutions special for you,

We use our own production infrastructure to tailor the needs of our customers. We know that each of our customers is special, and we design your solutions with our experienced team.

We design functional products,

In all our designs, we bring forward the functionality; We support our high quality perception with the functional use of wyw-catching designs.

We are developing the products with pedagogical and didactic approaches,

In our solutions in the field of education, we examine the use of the products in a pedagogical and didactic sense, we finalize product designs by the support of educators.

We systematically manage mechanical and technological R&D processes,

We are developing our R&D processes in both mechanical and technological fields. We manage our R&D companies by approving our projects to registered companies such as Scientific and Technological Research Council of Turkey (TUBITAK).

We provide the use of analog and digital technologies together,

We have years of experience in educational technologies, educational furnitures, writing boards and visual communication. In this sense, using technology in education, using analog and digital technologies together, we aim to bring the perfection to the education process in the technological sense.

We care about the environment

In our ISO 14001 certified company, we make environment-friendly production. Using ecological surfaces, FSC certified wood and paper products, recyclable aluminum and plastics, we implement waste management at European standards.

We manage people righteously and fairly without discrimination,

We have a people management policy in accordance with OHSAS 18001 standards. For us, happy staff means happy customers. For this reason; we pay strict attention to staff recruiting politics without distinction in the sense of politics, religion, gender and race.

Now let's talk about quality!

Experience the sense of quality in education with us by joining the Emko family.

Let's design the future classes together!

Emko Line Student Desk



- Durable** Polyurethane edge table
- Solid** 3mm ellipse-profile feet
- Different** Large study space by its feet design and large table
- Practical** Easy to carry with wheel detail

COLOR OPTIONS

- Metal Components**
Produced according to the metal Ral colors
- Front Panel**
Produced according to the metal Ral colors
- Table**
Produced as polyurethane edged or compact table



Emko Line:
Different quality, creating a new era in desk.

Emko marks another first...

Emko Line is changing your perspective with its new line, different design reviving the class with its ease of use.

While the angular table increases the space of use, the wheeled feet system provides an opportunity for group work by moving smoothly. Stable desks are now replaced by future desks which are active, moving and increasing dynamism.



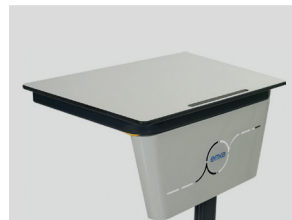
Wire basket



Study basket*



Wheels



Front panel*



Corporate logo sticker*

PRODUCT	MEASURES	DESCRIPTION	CODE
No:4	50x70 cm	Single Seater, h: 64 cm	M-3LS-T04
No:5	50x70 cm	Single Seater, h: 70 cm	M-3LS-T05
No:6	50x70 cm	Single Seater, h: 76 cm	M-3LS-T06

*It is optional and sold in addition to the standard product.



Are you ready to move...

Why should the classes, which are the start point of change in a rapidly changing world, not change? Emko Line, which will be able to reach the fast learning ability of the new generation, take their places in classes as the desks are solid, healthy and practical.



Special for each pupil not for class...

The desks that restrict your mobility, do not stretch, cannot be adjusted, are not suitable for your height, disturbing both your comfort and your body anatomy. Standardized types are produced according to certain standards, not according to individuals, so when you are tall, you are sitting in the back row and if you are short, you direct yourself depending on the posture of the person sitting in front.

Emko Line+ not only provides classroom movement; it also allows the person to adjust the desk according to their size and body type.

Emko Line+ Student Desk

COLOR OPTIONS

-Metal Components
Produced according to the metal Ral colors

-Front Panel
Produced according to the metal Ral colors

-Table
Produced as polyurethane edged or compact table



First in Turkey!

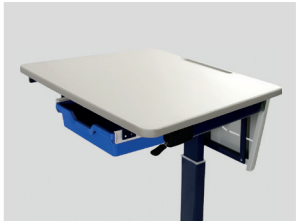
- Different** Height Adjustable
- Solid** 3mm ellipse-profile feet
- Durable** Polyurethane edge table
- Practical** Easy to carry with wheel detail

**Single-person desk,
Now available with Emko Line+...**

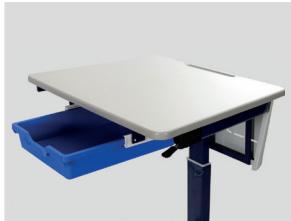
Classrooms are more flexible with Line+

The desks that do not allow flexible in the classes prevent the students from learning easily and disrupt the body's ergonomic structure.

Start the change from the classes for raising healthy individuals! The classes where students spend most of their time will stretch with Emko Line+. With the system solving the height difference problem by moving up and down, the desk of the new era will create active working spaces in the classroom with Emko Line+ wheel system. You can use the Emko Line + desks with Alto chairs to increase mobility.



Height Adjustment Latch



Study Basket*



Wheels



Front panel*



Pollyurethane edged or compact table

PRODUCT	MEASURE	DESCRIPTION	CODE
No:7	50x70 cm	Single Person, custom angled table, h: 64-81 cm	M-3LS-R07

*It is optional and sold in addition to the standard product.





Emko Mira Student Desk

COLOR OPTIONS

-Metal Components
Produced according to the metal Ral colors

-Front Panel
Produced according to the metal Ral colors

-Table
Produced as polyurethane edged or compact table



Durable and stylish...

Polyurethane edged table combined with double piped durable metal components is manufactured to last long. It is suitable for the use of different age groups with three different height adjustments. Wide table was used considering the ergonomic structure in the product manufactured as double and single seater.



Emko Mira Double-Seater



Emko Mira Single-Seater

- Durable** Polyurethane edge table
- Solid** 3mm double-piped profile feet
- Different** Wide study area with its 70x 50cm 120x50cm table
- Diverse** Option to use with or without the front panel



Front panel*



Wire basket



Bag hanger



Corporate logo sticker*

PRODUCT	MEASURE	DESCRIPTION	CODE
No:4	50x70 cm	Single Person, h: 64 cm	M-3MS-T04
No:5	50x70 cm	Single Person, h: 70 cm	M-3MS-T05
No:6	50x70 cm	Single Person, h: 76 cm	M-3MS-T06

*It is optional and sold in addition to the standard product.



Keep your standards high...

As its wide surface of use allows you to move around comfortably, with sense of quality, you will be able to use it for many years in the classrooms.

PRODUCT	MEASURE	DESCRIPTION	CODE
No:4	50x70 cm	Duo, h: 64 cm	M-3MS-C04
No:5	50x70 cm	Duo, h: 70 cm	M-3MS-C05
No:6	50x70 cm	Duo, h: 76 cm	M-3MS-C06

Emko Student's Music Desk



- Durable** Polyurethane edge table
- Solid** 3mm double-piped profile feet
- Different** Wide study area with its 70x 50cm table
- Diverse** Option to use with or without the front panel

COLOR OPTIONS

-Metal Components
Produced according to the metal Ral colors

-Front Panel
Produced according to the metal Ral colors

-Table
Produced as polyurethane edged or compact table

Let your classes move to the rhythm

With the note sheet placed on the front of the Mira music desks notepaper can be read easily while studying on the table.

Pouf types allow you to play the instruments comfortably and revive your classes. Designing the classes of the future, we combined both products with ease of use and comfort.



Hexagon Pouf*



Cylinder Pouf*



Cone Pouf*



Front panel*



Wire basket



Bag hanger



Corporate logo sticker*

PRODUCT	MEASURE	DESCRIPTION	CODE
No:4	50x70 cm	Single Person, h: 64 cm	M-3MS-Z04
No:5	50x70 cm	Single Person, h: 70 cm	M-3MS-Z05
No:6	50x70 cm	Single Person, h: 76 cm	M-3MS-Z06

* It is optional and sold in addition to the standard product.

* For pouf types check page 34.

Emko Student's Painting Desk



COLOR OPTIONS

-Metal Components

Produced according to the metal Ral colors

-Front Panel

Produced according to the metal Ral colors

-Table

Produced as polyurethane edged or compact table

Painting is more fun now

It is easy to use with the sloping table and the special section located next to it, specially designed for painting and drawing in the frame of ergonomic values. While placing the paint palette and paints on the side table, water container can be used safely in the space it holds.

The easel and pouf seating groups that you will position together with painting tables will add a modern look to your classes.



Durable

Polyurethane edge table

Solid

3mm pipe profile feet

Different

Wide study area with its 15 degree sloping table

Diverse

Option to use with or without the front panel



Sloping top table



Side table



Wire basket



Front panel

PRODUCT	MEASURE	DESCRIPTION	CODE
No:4	50x70 cm / 50x20 cm	Single Person, h: 64 cm	M-3MS-R04
No:5	50x70 cm / 50x20 cm	Single Person, h: 70 cm	M-3MS-R05
No:6	50x70 cm / 50x20 cm	Single Person, h: 76 cm	M-3MS-R06
No:6		Wooden easel	M-3SS-001

* It is optional and sold in addition to the standard product.

Emko Display Student Locker

COLOR OPTIONS

-Body and door

Produced according to its wood swatch card

-Lacquer handle

Produced according to its wood swatch card

-Enamel Surface

Produced as white steel enamel.

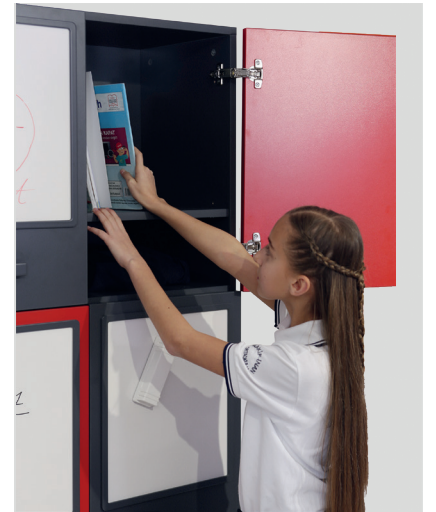
- Solid** 18mm Mdf body and doors
- Practical** Impact-resistant with 165 degree angled hinge
- Innovator** In-class communication space with its enamel doors
- Diverse** Digital or standard lock options
- Handy** Easy to use with door brake system



We personalized student lockers...

Children want active areas to express themselves. A magnetic enamel surface is placed on the door of the display student lockers. These individual areas allow children to engage in social interaction and contribute to their personal development. It has large internal volume and enough storage space.

Lockers are now more useful with personal writing board and large internal volume



18mm body and handle



White enamel writing board



165 degree angled hinge*



Digital lock*

PRODUCT	SINGLE LOCKER MEASURES	DESCRIPTION	CODE
80x40x180 cm	40x40x60 cm	6 door locker	M-9DE-S01
80x40x160 cm	40x40x40 cm	3 door locker	M-9DE-S02

* It is optional and sold in addition to the standard product.



New line in lockers

Personal lockers turn into a communication tool with enamel writing board. The way people express themselves is reflected in the lockers.

MEASURES	SINGLE LOCKER MEASURES	DESCRIPTION	CODE
80x40x200 cm	40x40x40 cm	10 door locker	M-9DE-S03
80x40x160 cm	40x40x40 cm	8 door locker	M-9DE-S04
80x40x120 cm	40x40x40 cm	6 door locker	M-9DE-S05
80x40x160 cm	40x40x40 cm	4 door locker	M-9DE-S06
80x40x120 cm	40x40x40 cm	3 door locker	M-9DE-S07

Emko Display Student Locker



COLOR OPTIONS

-Body and doors
Produced according to its wood switch card

-Lacquer handle
Produced according to its wood switch card

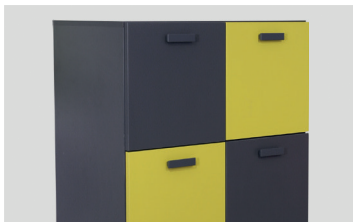


- Durable** 18mm Mdf body and door
- Solid** Impact-resistant with 165 degree angled hinge
- Practical** Easy to use with door brake system
- Diverse** Digital or standard lock options

Let the classes revive with different colors

Durable and stylish

The product which has the ideal storage space offers different alternatives with compartment options in different sizes and numbers. Change the mood of your classes with color options.



18mm body



MDF Lacquer handle



165°angled hinge



Digital or Standard Lock*

MEASURES	SINGLE LOCKER MEASURES	DESCRIPTION	CODE
80x40x200 cm	40x40x40 cm	10 door locker	M-9MS-S03
80x40x160 cm	40x40x40 cm	8 door locker	M-9MS-S04
80x40x120 cm	40x40x40 cm	6 door locker	M-9MS-S05
80x40x160 cm	40x40x40 cm	4 door locker	M-9MS-S06
80x40x120 cm	40x40x40 cm	3 door locker	M-9MS-S07

* It is optional and sold in addition to the standard product.

Emko Modular Class Locker



- Durable** 18mm MDF body and door
- Solid** Impact-resistant with 165 degree angled hinge
- Practical** Easy to use with door brake system
- Diverse** Digital or standard lock options

Create your own locker...

With its modular structure, it can be used as a single piece or you can create a model by combining it with the options offered. With the wheel system, you can easily move to any corner of the class and position it wherever you want. By this means, everyone in the classroom will have a common area and by sharing with each other children will improve their communication skills.

COLOR OPTIONS

-Body and doors

Produced according to its wood swatch card

-Study Box

Standard 7 colors are preferred.

Green
Light Green
Blue
Yellow
Grey
Red



**Multi-fuctional,
very practical**



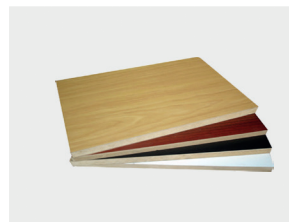
Study box*



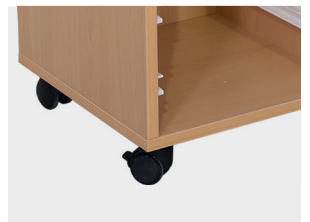
Digital or Standard Lock*



165°angled hinge



18mm shelf*



Wheels with brake*

MEASURES

105x40x85cm

DESCRIPTION

Moduler multi-fuctional locker

CODE

M-9DE-001

* It is optional and sold in addition to the standard product.

Emko Display Teacher Locker



- Solid** 18mm MDF body and door
- Durable** Impact-resistant with 165 degree angled hinge
- Innovator** In-class communication space with its enamel doors
- Diverse** Digital or standard lock options
- Handy** Easy to use with door brake system
- Different** Cloakroom section and study box

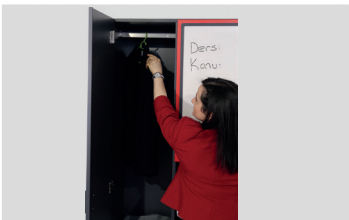
COLOR OPTIONS

- Body and door**
Produced according to its wood swatch card
- Lacquer Handle**
Produced according to its wood swatch card
- Enamel Surface**
Produced as white steel enamel.

Emko Display teacher locker,

Emko; when designing future classes, not only the students but the teacher could also be more physically and socially active inside the classroom; Emko designs products where teacher can communicate and share more. Emko Display, with the magnetic enamel surface placed on the door of teacher's locker, helps teacher to convey important formulas, subjects and hints.

Fine details will change your perception of classroom locker



Cloakroom section



White enamel writing board



165°angled hinge



Digital or Standard Lock*

MEASURES	DESCRIPTION	CODE
80x40x180 cm	Cloakroom section, bookcase and study box details	M-9DE-001

* It is optional and sold in addition to the standard product.

Emko Mira Teacher Locker



Emko marks another first...

Emka Mira teacher's locker with its different design and usage feature allows the teacher to hang up the items easily with the hanger tube inside the long door compartment and with the ideal compartmentalized area as a coat rack.

It has the ideal storage space for storing magnetic study boards and similar products. With the combination lock and standard lock options, the user can personalize and use the

Durable

18mm body and door

Solid

Impact-resistant with 165 degree angled hinge

Handy

Easy to use with door brake system

Diverse

Digital or standard lock options

COLOR OPTIONS

-Body and doors

Produced according to its wood swatch card

-Study Box

Standard 7 colors are preferred.

Green
Light Green
Blue
Yellow
Grey
Red



Study box*



Cloakroom detail



165°angled hinge



Digital or Standard Lock*

MEASURES

80x40x180 cm

DESCRIPTION

18mm body and locker with door

CODE

M-9MS-001

* It is optional and sold in addition to the standard product.

Emko Line Teacher Table



- Durable** Compact table
- Advantageous** Caisson and locker details
- Different** Large study space by its feet design and angled table
- Diverse** Push-to-open outlet detail

COLOR OPTIONS

-Metal Component
Produced according to the metal RAL colors

-Front Panel
Produced as compact.

-Table
Produced as compact.



Teacher's table is now more functional

Teachers should not lose communication with students throughout the course and be able to make eye contact with the students. Emko Line, designed for this purpose, allows teacher to make eye contact easily with the students even when sitting at the teacher's desk. This way, the students' attention to the course increases and the course is more efficient.

The outlet channel allows the use of electronic devices. With the multipurpose drawers and caisson with compartmented cabinet provides ideal storage space.



Two drawer caisson



Push-to-open table module*



90cm high casting leg



MDF handle

PRODUCT	MEASURES	DESCRIPTION	CODE
No:7	75x130 cm	Compact table	M-3LM-007

* It is optional and sold in addition to the standard product.



Teacher tables are changing...

Emko Line, which brings a different point of view to the teacher's desk, will be your choice with its different design and structure that gives the teacher storage space. The teacher's desk, positioned with an alto ringed chair, will increase teacher's domination inside the classroom.

Emko Mira Teacher Table



- Durable** Compact table
- Solid** 3mm pipe profile feet
- Different** Caisson detail with drawer

COLOR OPTIONS

-Metal Components
Produced according to the metal RAL colors

-Front Panel
Produced according to its wood swatch card

-Table
Produced as polyurethane edged or compact table

Comfort and style designed together

The compact laminate table, combined with the durable metal components, is built to last long. With the outlet channel detail, it allows the use of electronic devices. With the multipurpose drawers it offers ideal storage space.



Two drawers



Push-to-open table module*



18mm front panel



Double pipe feet

PRODUCT	MEASURES	DESCRIPTION	CODE
No:6	60x130 cm	Single Person, Height : 76cm	M-3MS-007

* It is optional and sold in addition to the standard product.

Emko Mira Teacher Rostrum

COLOR OPTIONS

-Metal Components

Produced according to the metal RAL colors

-Front Panel

Produced according to its wood swatch card

-Table

Produced as polyurethane edged or compact table

- Durable** Polyurethane edge table
- Solid** 3mm double-piped profile feet
- Different** Wide study area with its 50x70cm table
- Useful** 18 mm front panel



Ideal solution for narrow classrooms...

With its practical structure, the Mira teacher's rostrum, which does not occupy space in classrooms, will allow you to use it for a long time with its solid structure. When used together with the alto ringed chair it reaches a much more comfortable structure.

Emko Line+ Teacher Rostrum



- Innovator** Height Adjustment with its special system
- Solid** 3mm ellipse-profile feet
- Different** Wide study area with its feet design and angled table
- Useful** Height Adjustable
- Practical** Easy to carry with wheel detail

Personal rostrum...

Emko Line + rostrum allows user to adjust height as it catches eyes with its different design. It is more functional when used together with the alto ringed chair.

MEASURES	DESCRIPTION	CODE
50x70 cm	Emko Mira teacher rostrum, polyurethane table	M-3MK-001
50/60x70 cm	Emko Line+ teacher rostrum, polyurethane table	M-3LK-001

Emko Folding Group Table

COLOR OPTIONS

-Metal Components

Produced according to the metal RAL colors

-Table

Produced as polyurethane edged or compact table



- Durable** 18mm Mdf
- Practical** Easy to carry with wheel detail
- Different** Folding feet design
- Diverse** Plug module option



Will add volume to classrooms...

Folding group table; with its special mechanism, it can easily be folded and stacked side by side inside the class, occupying less space in the classroom. It is a flexible product with its wheels with brakes. The folding group table is ideal for group work, allows you to socialize by increasing communication and sharing inside the classroom.



18mm wide table



Push-to-open table module*



Folding special feet



Wheels with brakes

PRODUCT	MEASURES	DESCRIPTION	CODE
No:6	90x200 cm	Four People, Height : 76cm	M-3MA-006

* It is optional and sold in addition to the standard product.



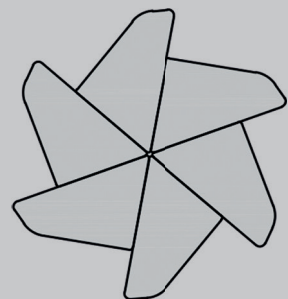
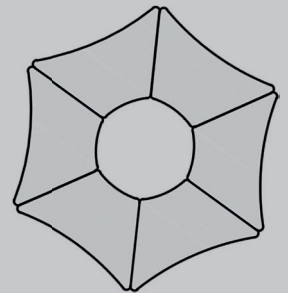
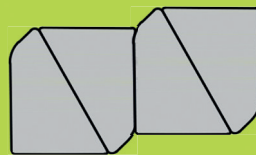
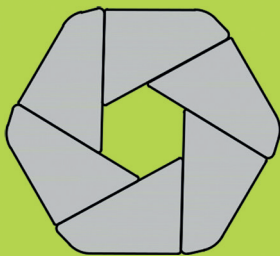
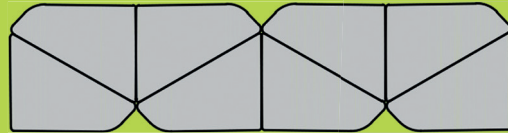
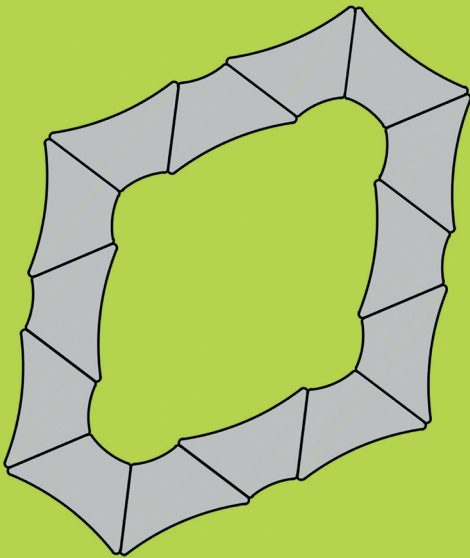
Fine details will make things easier for you

Plug socket, wheel system and folding leg structure will allow you to do group work without occupying space. Folding group table, more preferred in STEM classes, laboratories and workshops, becomes much more practical and useful when used with Alto chairs.

Emko Modular Tables



Practical solution for group works.



They will make a difference with their structure easy to shape





Shape your classes with Wings...

With its modular structure, you can use it as one piece or use the options offered and create the desired shape. You can create a functional and aesthetic visual in the classroom with the models according to your needs and taste. With the wheel system, you can easily move to any corner of the class and locate it wherever you want. Everyone will have a common area in the classroom and children will share and be able to improve their communication skills in this area.

Emko Wings Modular Table



- Durable** 18mm table
- Solid** 32mm pipe feet
- Different** Wide study area with its feet design and angled table
- Optional** Easy to use with basket option
- Practical** Easy to carry with wheel detail

COLOR OPTIONS

-Metal Components
Produced according to the metal RAL colors

-Table
Produced as polyurethane edged or compact table



Different design, comfortable use...

Modular design of the product can be used as a single desk, as it can be located in front with the wheel with brakes allowing group works in desired way. It increases efficiency especially in courses, where group and partner works are often carried out. It offers an aesthetic appearance to the classes with different color options and its special design. It is suitable for use in all age groups with different height options.

PRODUCT	MEASURES	DESCRIPTION	CODE
No:4	105x60 cm	Single Person, Height: 64 cm	M-3WM-M04
No:5	105x60 cm	Single Person, Height:70 cm	M-3WM-M05
No:6	105x60 cm	Single Person, Height: 76 cm	M-3WM-M06

Emko Bean Modular Table



- Durable** 18mm table
- Solid** 32mm pipe feet
- Different** Wide study area with its feet design and angled table
- Optional** Easy to use with basket option
- Practical** Easy to carry with wheel detail

COLOR OPTIONS

-Metal Components
Produced according to the metal RAL colors

-Table
Produced according to its wood swatch card

Whether a single desk or a modular table

Modular design of the product can be used as a single desk, as it can be located in front with the wheel with brake allowing group works in desired way.

It is suitable for use in all age groups with different height options.



PRODUCT	MEASURES	DESCRIPTION	CODE
No:4	50x70 cm	Single Person, Height: 64 cm	M-3BM-M04
No:5	50x70 cm	Single Person, Height: 70 cm	M-3BM-M05
No:6	50x70 cm	Single Person, Height: 76 cm	M-3BM-M06

Emko Tetra Modular Table



- Durable** 18mm table
- Solid** 32mm pipe profile feet
- Different** Wide study area with its feet design and angled table
- Practical** Easy to carry with wheel detail

COLOR OPTIONS

-Metal Components
Produced according to the metal RAL colors

-Table
Produced according to its wood swatch card

Different design for group works...

It is ideal product for group and partner works with its modular design that can be used as a single. It can be moved easily and combined depending on the way course is carried out with its wheel option. It is suitable for use in all age groups with three different height options.



PRODUCT	MEASURES	DESCRIPTION	CODE
No:4	105x53 cm	Single Person, Height: 64 cm	M-3TM-M04
No:5	105x53 cm	Single Person, Height: 70 cm	M-3TM-M05
No:6	105x53 cm	Single Person, Height: 76 cm	M-3TM-M06



Feel the comfort...

Notice the quality with its ergonomic monoblock form and its polypropylene structure prevents sweating and slipping.

Make more colorful classrooms with its different leg models and 6 standard monoblock color. While A chair provides comfortable seating by pressing from four points on the floor, Z chair provides a comfortable sitting with the flexibility.

Emko Z Chair



- Durable** 25mm special inflexion pipe profile
- Healthy** Polypropylene monoblock suitable for ergonomic structure
- Practical** Special form on top for carrying easily
- Optional** 6 standard monoblock color options

COLOR OPTIONS

-Metal Components
Produced according to the metal RAL colors

-Monoblock colors
Produced in standard 6 colors

Blue
Grey
Green
Anthracite
Red
Orange



Much more comfortable with special leg structure design

Emko Z chair is designed considering the body health of the student, who spends a long time in class. The surface texture of the seat and backrest is monoblock polypropylene material that is non-scratch and hygienic to prevent slipping. It is produced according to ergonomic values in sitting surface and height measures

It is suitable for use in all age groups with three different height options.



Monolithic Polypropylene Monoblock



Cut-out handle and top protrusion for carrying easily



25mm pipe profile feet structure



Textured surface to prevent slipping



Suitable design for stacking

PRODUCT	MEASURE	DESCRIPTION	CODE
No:4	h:64 cm	PP monoblock Z chair	M-3ZS-P04
No:5	h:70 cm	PP monoblock Z chair	M-3ZS-P05
No:6	h:76cm	PP monoblock Z chair	M-3ZS-P06

* In purchases over 500 pieces, other monoblock colors are worked besides the standard colors.

Emko A Chair

COLOR OPTIONS

-Metal Components
Produced according to the metal RAL colors

-Monoblock colors
Produced in standard 6 colors

Blue
Grey
Green
Anthracite
Red
Orange



Durable

25mm special inflexion pipe profile

Healthy

Polypropylene monoblock suitable for ergonomic structure

Practise

Special form on top for carrying easily

Optional

6 standard monoblock color option

Special feet structure design stepping on floor on four points

The surface texture of the seat and backrest is monoblock polypropylene material that is non-scratch and hygienic to prevent slipping. It is produced according to ergonomic values in sitting surface and height measures

It is suitable for use in all age groups with three different height options. It steps safely on the floor providing a comfortable sitting with its metal component.



Monolithic Polypropylene Monoblock



Cut-out handle and top protrusion for carrying easily



25mm pipe profile feet structure



Textured surface to prevent slipping



Suitable design for stacking

PRODUCT	MEASURES	DESCRIPTION	CODE
No:4	h:64 cm	PP monoblock A chair	M-3AS-P04
No:5	h:70 cm	PP monoblock A chair	M-3AS-P05
No:6	h:76 cm	PP monoblock A chair	M-3AS-P06

* In purchases over 500 pieces, other monoblock colors are worked besides the standard colors.

Emko Alto Chairs

COLOR OPTIONS

-Metal Components
Chrome plating star feet

-Monoblock colors
Produced in standard
6 colors

Blue
Grey
Green
Anthracite
Red
Orange



Alto Ringed Chair

Alto Rolling Chair

Alto Stable Chair

Classes will be more active with them...

Alto chair models, with their special suspension mechanisms that can be adjusted at desired height, can be used with tables and desks at different heights. Products suitable for using while standing or sitting, especially Emko Line, are ideal when used with the Emko Line + desk and modular table.

When used with the Emko Line teacher's desk, the Alto ringed chair allows teacher to make eye contact with all students in class while sitting.

Alto rolling chair allows you to move easily with the wheels when used with modular tables and group tables.

Alto stable allows the student to adjust the height of the chair when used with Emko Line + chair.

- Durable** Star feet with suspension
- Healthy** Polypropylene monoblock suitable for ergonomic structure
- Diverse** Three different product types according to places of use
- Solid** Long life pingo and wheel system



Monolithic Polypropylene Monoblock



Height adjusting suspension handle



Pingo star feet with stepping attachment



Rolling Star feet



Pingo Star feet

PRODUCT	MEASURE	DESCRIPTION	CODE
No:5,6,7	h:42-65 cm	PP Monoblock Alto ringed chair	M-3AH-P08
No:5,6	h:42-46 cm	PP Monoblock Alto rolling chair	M-3AH-PT7
No:5,6	h:42-46 cm	PP Monoblock Alto stable chair	M-3AH-P07

* In purchases over 500 pieces, other monoblock colors are worked besides the standard colors.



Practical solution for narrow areas

Why should the classes, which are the start point of change in a rapidly changing world, not change? Emko Line, which will be able to reach the fast learning ability of the new generation, take their places in classes as the desks are solid, healthy and practical.

Emko Icon Conference Chair



- Durable** 25mm special inflexion pipe profile
- Healthy** Polypropylene monoblock suitable for ergonomic structure
- Handy** Special P cut wide table
- Optional** Chrome plating color option in metal components

COLOR OPTIONS

-Metal Components
Produced according to the metal RAL colors

-Monoblock colors
Produced in standard 6 colors

Blue
Grey
Green
Anthracite
Red
Orange



New design in conference chair

Icon conference chair will be your choice in classrooms and meet ing rooms with its new design. Enjoy a comfortable seat with a monolithic Polypropylene monoblock, while the special cut-out P table provides wide studying area.

Bring a stylish appearance to your classrooms with a chrome plated feet color option.



Monolithic Polypropylene Monoblock



Special cut-out P table



Special hinge system that allows movement



25mm pipe profile feet structure

PRODUCT	MEASURES	DESCRIPTION	CODE
No:6	h:46 cm	PP Monoblock, armrest chair	M-3IS-PT6

Emko Waiting Poufs

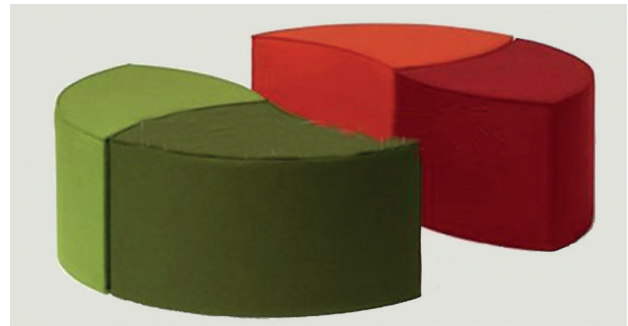


Sedro waiting pouf

COLOR OPTIONS

- Fabric
Can be chosen from fabric swatch card

- Durable** High density sponge
- Solid** Special wood structure
- Different** Combinable modular structure



Quad waiting pouf

Practical usage with its modular structure

The poufs you will use in the workshop classes, corridors, waiting areas; lightweight, portable and in modular structure to ease your work. Its quality structure and textured fabric provide the opportunity to use it in all areas.



Hexagon Pouf



Cylinder Pouf



Cone Pouf

MEASURES	DESCRIPTION	CODE
40x50x70 cm	Quad Lounge Pouf	M-BQS-001
40x35x54 cm	Cedro Lounge Pouf	M-BSS-001
50x50x54 cm	Hexagon Pouf	M-BPS-001
50x50x54 cm	Cylinder Pouf	M-BSS-002
50x50x54 cm	Cone Pouf	M-BKS-001

Emko Plastic Study Box

COLOR OPTIONS

-Study Box
Standard 7 colors preferred

Green
Pistachio Green
Blue
Yellow
Grey
Red

-Study Board
Produced as white enamel

Durable Non-breakable plastic drawer

Innovator 3 different sizes for storage

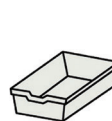
Practical Easy to use with drawer system

Optional Different color options



Classes color up with them

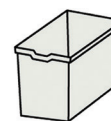
Colorful plastic study boxes have three different sizes and five different color options. You can use it under the desk, in modular class lockers, inside the lockers and many other places with stylish and ideal storage space.



No: 1



No: 2



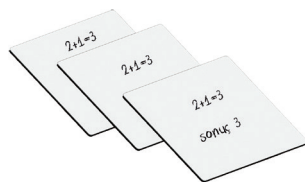
No: 3

Emko Study Board

Different Light design for question-answer study

Innovator e3 licensed enamel surface

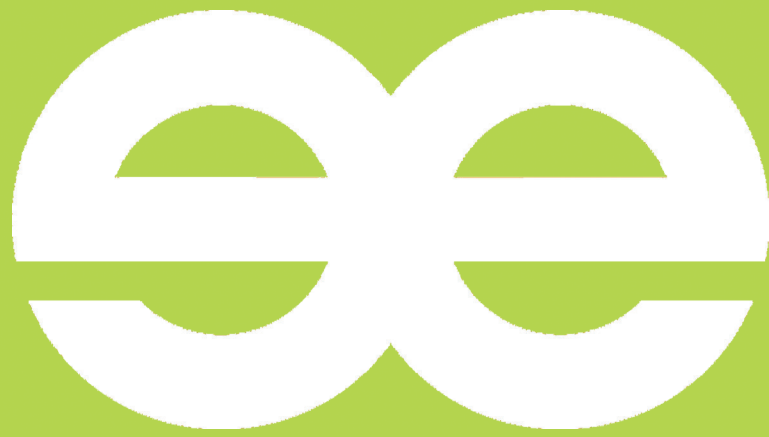
Practical Can be stuck on board with magnetic feature



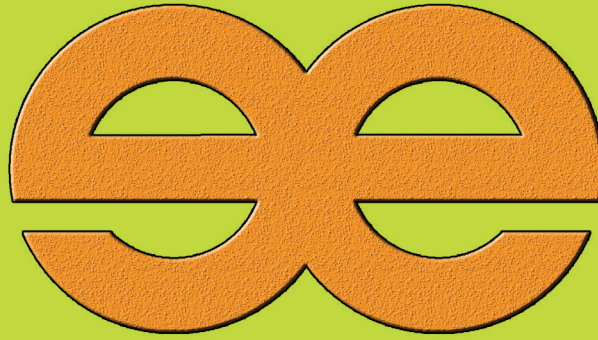
Question-Answer study is more fun with it

Enamel surfaced study boards with magnetic future helps student to actively participate in the class. Student's participation in the class will speed up with its ideal size that can be used as a sheet and writable-erasable surface. This way it promotes people to actively participate in the course.

PRODUCT	MEASURES	DESCRIPTION	CODE
No:1	31x37,7x7,5 cm	Study Box	M-6KP-M0S
No:2	31x37,7x15 cm	Study Box	M-6KP-M0M
No:3	31x37,7x30 cm	Study Box	M-6KP-M0L
No:1	29x33x0,25 cm	Enamel surface, magnet	M-6TE-E01



www.ee.com.tr



EMKO EMAYE YAZI TAHTALARI ve EGİTİM GEREÇLERİ A.Ş.

Cakmakli Mah. Hadimkoy Yolu cad. No:75 Emko Center
Buyukcekmece / Istanbul / TURKEY

☎ +90 212 886 86 85 - +90 212 886 99 20 (Pbx)

☎ +90 212 886 83 33

www.ee.com.tr